

gel analysis software

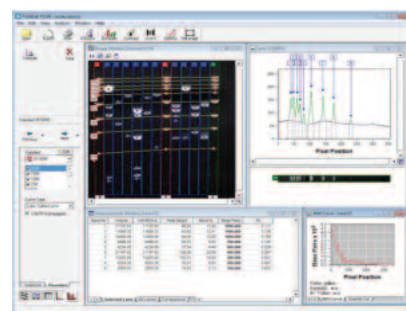
TOTALLAB 1D AND CLIQS

TotalLab 1D and CLIQS gel analysis software options are available for quantitative gel analysis following gel documentation. Each software option offers the highest level of automation currently available and guides the user step by step through the analysis process. A user-friendly interface is split into four parts allowing the user to view within a single screen every aspect of gel quantitation, including the gel image, lane and band profiles, analysis data and the help menu.

TotalLab 1D is used primarily for 1D gel quantitation and is suitable for all users regardless of their experience. More advanced CLIQS software is recommended for researchers performing in-depth lane relationship studies. Details of each software option are as follows:

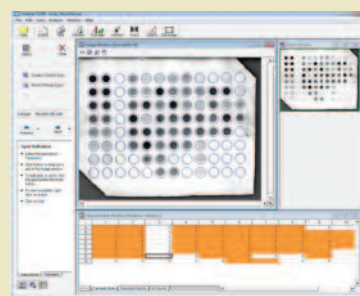
TotalLab 1D Module, the 1D gel analysis module of CLIQS (see below), is supplied exclusively with microDOC1D models. TotalLab 1D features a user-friendly interface and help menu that provide a simple, guided workflow for fast and accurate quantitation and calibration of 1D gels and western blots. Main benefits include:

- The capacity to review each step within the automated workflow analysis, and manually intervene or edit if desired
- Highly developed algorithms which accurately detect lanes and bands even on distorted gel images
- A range of visualisation tools that facilitate further examination of lane and band data to verify results, including band calibration from Molecular Size standard lanes and accurate quantitation derived from known band volumes
- Full user control over the visualisation tools and the data displayed, allowing only the important data fields and images of choice to be selected for final output
- Multiplex analysis

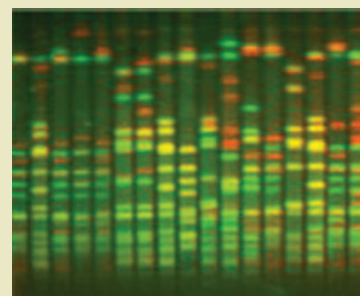


TotalLab 1D

CLIQS includes TotalLab1D plus three modules for array analysis; colony counting and 2D spot measurement; and general feature-based image analysis. The array analysis module can automatically detect up to 1536 wells or arrays spots, and may also be used to quantify dot and slot blots. Array analysis and Toolbox modules also include multiplex analysis functionalities.

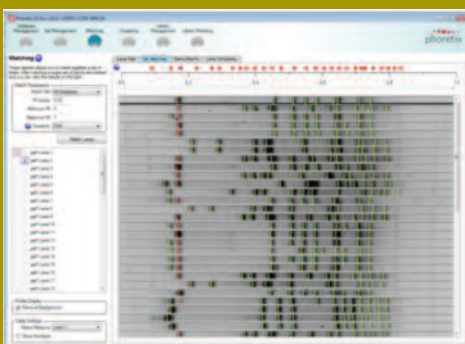


CLIQS- Array Analysis



TotalLab 1D / CLIQS - Multiplex Analysis

Technical Specification	TotalLab	CLIQS 1D	CLIQS 1D Pro
Compatible with 21CFR part 11 compliance module	✓	✓	
Automatic detection of lanes and bands	✓	✓	✓
Automatic background subtraction	✓	✓	✓
Image manipulation tools	✓	✓	✓
Lane templates	✓	✓	✓
Analysis protocols for batch processing			✓
Molecular weight calibration	✓	✓	✓
Quantity calibration & normalisation	✓	✓	✓
Profile deconvolution	✓	✓	✓
Rf calibration	✓	✓	✓
Band pattern matching - single gel	✓	✓	✓
Band pattern matching - lanes across multiple gels			
Band pattern queries			
Dendrogram - single gel	✓	✓	✓
Dendrogram - lanes from multiple gels			
Data archive and search facility			
Classification and identification tools			
Reports	✓	✓	✓
Array analysis module		✓	✓
Colony counting module		✓	✓
Tool Box module		✓	✓



CLIQS 1D Pro

CLIQS 1D Pro is more advanced analysis software used primarily for band-pattern matching within individual DGGE, SSCP and RFLP gels that are important for cultivar experiments, evolutionary biology and population genetics. CLIQS 1D Pro has a powerful band matching feature, which is flexible and easy to use, while visual tools show the results of matching and identify similarities within an individual gel, including lane clustering via dendrograms.

In addition to all the features included in CLIQS analysis package, CLIQS 1D Pro can:

- Identify sample relationships across multiple gels using dendrograms and data matrices.
- Build up reference libraries of band patterns to share and classify new strains and samples
- Provide optional CLIQS 1D 21CFR compliance for GLP/GMP laboratories Automated detection algorithms for fast and accurate image analysis
- Provide long-term archiving and storage of data from multiple gels
- Offer comparison of each lane with any other lane within the database, with the results presented as dendrograms or tables that show all band and lane similarities, thereby enabling identification of lane relationships across many different experiments

ORDERING INFORMATION

TotalLab1D	TotalLab 1D analysis module for agarose and PAGE gels; available only with the purchase of MicroDOC1D models
CLIQS	Core Laboratory Image Quantification Software (1D Image Analysis of DNA & protein, Western blotting . Colony counting and basic 2D spot measurement
CLIQS1DPRO	Core Laboratory Image Quantification PRO Software (Accurate comparison of banding patterns in samples across multiple gels/experiments)
CLIQS1D21CFR	Core Laboratory Image Quantification PRO Software (Accurate comparison of banding patterns in samples across multiple gels/experiments) 21CFR compliance for GLP/GMP laboratories Automated detection algorithms for fast and accurate image analysis