

# blotters

semi-DRY

These Semi Dry Blotters offer rapid transfer times for DNA, RNA and protein blotting - typically 15 to 30 minutes. All units can be used for all types of blotting: western, southern and northern via uncomplicated buffer and set up procedures and are compatible with gel thicknesses from 0.25 up to 10mm without the need for additional equipment. Each unit is compatible with their respective omniPAGE vertical gel system.

Semi Dry Blotting has the added benefit of economic transfers due to very low buffer volumes - typically only a few millilitres of buffer are required per transfer. These Semi-Dry Blotters utilise a screw down lid, which secures the blot sandwich and allows complete control of pressure ensuring even transfer. The electrodes,

comprising platinum coated anode and stainless steel cathode, will exhibit practically no corrosion and so provide many years of trouble free use.

Uniform heat dispersion across the blot sandwich ensures stable transfer times and no heat induced sample loss or transfer distortions. Being translucent, it allows viewing of the blot sandwich to ensure correct positioning and transfer is occurring correctly. Electrode plates are fully separated to prevent arching or damage.



Note: New injection moulded BCSD10/BCSD20 style shown; other models are of different construction

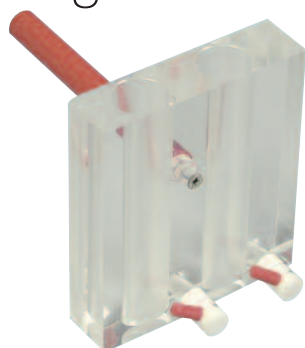


- RAPID TRANSFER TIMES
- WESTERN, SOUTHERN AND NORTHERN BLOTS
- ECONOMIC TRANSFERS DUE TO VERY LOW BUFFER VOLUMES
- SCREW DOWN LID - ACCOMMODATES GELS FROM 0.25 UP TO 10MM
- UNIFORM HEAT DISPERSION

## Technical Specifications

UNIT DIMENSIONS (W x L x H)	MINI	16 x 16 x 7cm
	MAXI	26 x 26 x 7cm
	MAXI PLUS	39 x 51 x 7cm
	MAXI LONG	26 x 56 x 7cm
MAX. SAMPLE CAPACITY	MINI	1 BLOT, 8 x 8.5cm
	MAXI	1 BLOT, 16 x 17.5cm
		2 BLOTS, 16 x 8.5cm
	MAXI PLUS	4 BLOTS, 8 x 8.5cm
		1 BLOT, 35 x 45cm
	MAXI LONG	1 BLOT, 20 x 50cm
BUFFER VOLUME	MINI	5ML
	MAXI	20ML
	MAXI PLUS	75ML
	MAXI LONG	50ML

# gradient mixers



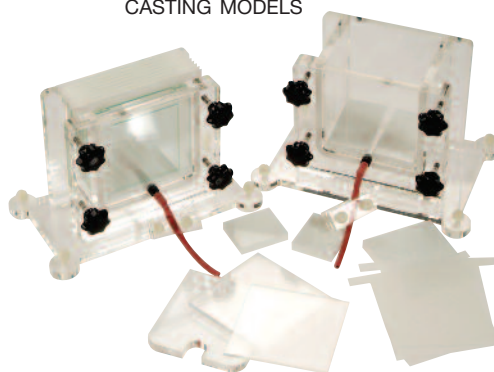
- FOR PREPARATION OF CENTRIFUGATION GRADIENTS
- FIVE SIZES

Ideal for Caesium, Sucrose and Gel gradients the Gradient Mixer series comprises two chambers - a reservoir and a mixing chamber with an interconnecting valve. A second valve regulates the output flow from the mixing chamber. All mixers have a flat base which allows them to be placed on a magnetic stirrer. A magnetic stirring bar can be placed directly in the mixing chamber to ensure a constant gradient. The support rod allows the mixer to be fixed to a retort stand for extra stability.

# gel casting

MULTIPLE

- INTEGRAL LEVELLING FEET AND LEVEL BUBBLE
- STANDARD AND GRADIENT GELS CAN BE Poured
- CHOICE OF 6, 12 OR 24 GEL CASTING MODELS



Advance casting of multiple mini and maxi gels can help to achieve consistent results between runs. These multiple gel casting systems are tailored for use with omniPAGE mini and omniPAGE maxi vertical electrophoresis units; with three models of 6, 12 and 24 gel capacities. Fewer gels can be poured if required using the acrylic saver blocks supplied with each system.

The fixed hinged clamps allows the gel sandwich to be adjusted to the correct pressure irrespective of the number or the thickness of gels being poured. Separation sheets allow the easy separation of the glass plates after pouring.

## ORDERING INFORMATION

### Semi Dry Blotters\*

SD10	Semi Dry Mini, 10 x 10cm System	SD33*	Semi Dry Maxi Plus, 33 x 45cm System
SD20	Semi Dry Midi, 20 x 20cm System, shown above	SD50*	Semi Dry Maxi Long, 20 x 50cm System

### Gradient Mixers

GM15	15ml Gradient Mixer	GM100	100ml Gradient Mixer
GM25	25ml Gradient Mixer	GM500	500ml Gradient Mixer
GM50	50ml Gradient Mixer		

### Multi Vertical Gel Casters

6CAST	6 gel caster for 8 x 10cm or 10 x 10cm mini gels	24CAST	24 gel caster for 8 x 10cm or 10 x 10cm mini gels
12CAST	12 gel caster for 8 x 10cm or 10 x 10cm mini gels	206CAST	6 gel caster for 20 x 20cm gels maxi gels

\* Note that large format Semi Dry Blotters are fabricated rather than injection moulded