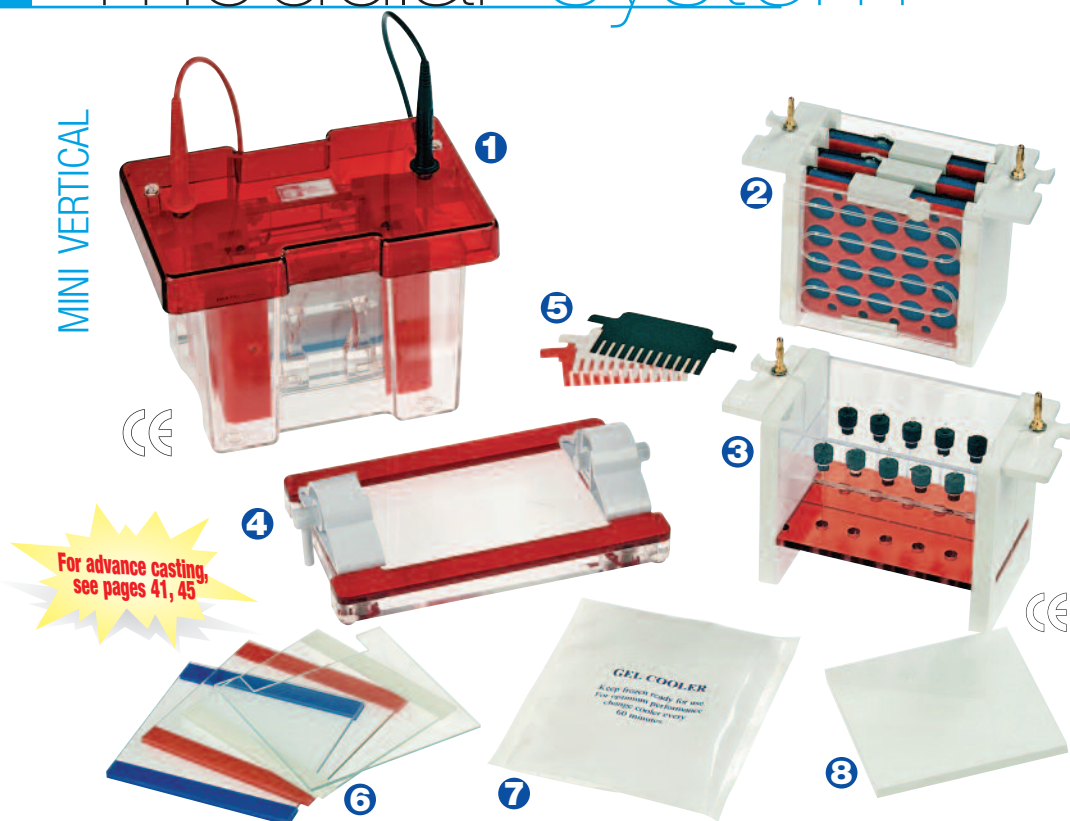


modular system

- ECONOMY OF BENCH SPACE AND COST
- ENHANCED REPRODUCIBILITY
- SIMPLE TO USE CASTING
- RAPID SET UP COOLING

The omniPAGE range of Modular Vertical Gel Systems allow multiple electrophoresis techniques to be performed in the same unit. Using the same main tank and lid, three different modules are interchangeable for PAGE, tube gel and electroblotting techniques. These systems are available in three size options, MINI 10 x 10cm, MINI Wide 20 x 10cm and MAXI WAVE 20 x 20cm and MAXI Plus 20 x 30cm, as individual, combination or complete modular systems. Combination and modular systems offer maximum value and space and have the added benefit of increased consistency which results from using the same universal base and lid.

MINI VERTICAL



COMPONENTS OF OMNIPAGE MINI MODULAR SYSTEM

- 1 Tank, Lid and PAGE Module
- 2 Electroblotting Module
- 3 Capillary Electrophoresis Module
- 4 Casting Base
- 5 Combs
- 6 Glass Plates with bonded spacers
- 7 Cooling Pack
- 8 Blanking Plate

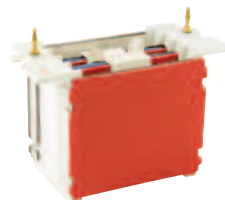
This system includes all modules and accessories required for Mini Slab Gel Electrophoresis, 2-D Electrophoresis and Electroblotting. The central component of these Systems is the omniPAGE Mini Vertical Unit. This includes a rapid and intuitive casting system, enhanced and easy to set up cooling system and increased gel capacity - each can run up to four gels per run*. OmniPAGE Tube gel modules are capable of resolving up to 10 first dimension gels and the Electroblotting modules have a four blot capacity. This package includes all the necessary accessories for Slab Gel, First Dimension and Electroblotting. Each of these techniques benefits from rapid set up cooling packs which provide enhanced resolution even during high intensity 2-D electrophoresis and electroblotting.

Technical Specifications

PLATE DIMENSIONS,	10 x 10cm (W x L)
GEL DIMENSIONS,	7.5 x 8cm (W x L)
UNIT DIMENSIONS	19 x 13 x 15cm (W x D x H)
MAX. SAMPLE CAPACITY	PAGE - 80 SAMPLES, 20 SAMPLES /GEL BLOT - 4 BLOTS 2D - 10 TUBES
BUFFER VOLUME	MIN 250ML; MAX 1200ML
COMBS AVAILABLE :	
No. OF SAMPLES	1, 5, 8MC, 9, 10, 12, 16MC, 20
THICKNESSES	0.75, 1, 1.5, 2MM

High Intensity Blotting MODULE

The Hi-Intensity Blot Module comprises Plate electrodes, just 2cm apart, to generate a powerful electric field. This provides transfer capability for up to two 10x10cm gels in as little as one hour.



ORDERING INFORMATION

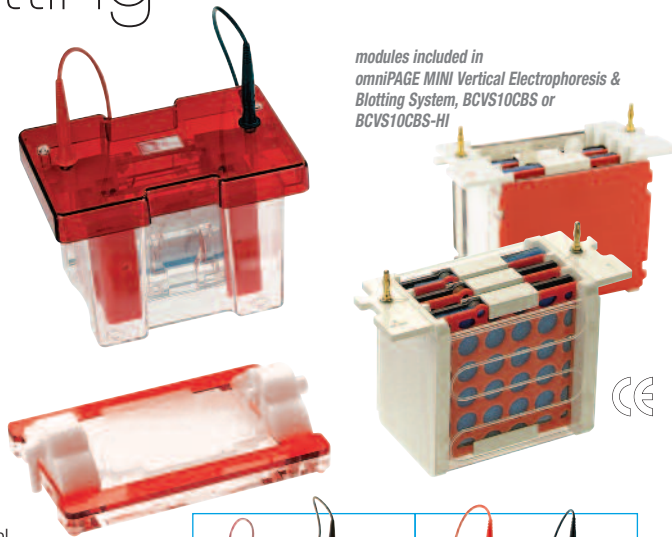
BCVS10CES	Complete Mini (10x10cm) Vertical Electrophoresis Modular System , comprising: 1x omniPAGE Mini Vertical Unit which includes: 2x2mm thick notched glass plates, 2x2mm thick plain glass plates with 1mm thick bonded spacers, 1x dummy plate, 2x combs (1mm thick, 12 samples), 1x casting base, silicone mat, cooling pack plus: 1x Capillary Electrophoresis Module which includes: internal running module for tube gels, capillary tubes, blanking plugs, 2-D combs and spacers plus: 1x Electroblotting Module comprising: internal electroblotting module, 4x compression cassettes for gel sizes up to 10x10cm and 8x fibre pads	
BCVS10C2DS	Complete omniPAGE Mini 2-D System , comprising: 1x omniPAGE Mini Vertical Unit which includes: 2x2mm thick notched glass plates, 2x2mm thick plain glass plates with 1mm thick bonded spacers, 1x dummy plate, 2x combs (1mm thick, 12 samples), 1x casting base, silicone mat, cooling pack plus: 1x Capillary Electrophoresis Module which includes: internal running module for tube gels, capillary tubes, blanking plugs, 2-D combs and spacers	
BCVS10DC	omniPAGE Mini Tube Gel Unit, 10x10cm with tank and lid, glass capillary tubes, blanking ports and cooling pack	MCT10 Mini Capillary Tubes, 1.0mm, pk/10 MCT101.5 Mini Capillary Tubes, 1.5mm, pk/10
BCVS10DCI	omniPAGE Mini Tube Gel Module - includes glass tubes and blanking ports	MCBP Mini Capillary Blanking ports

* requires additional glass plates and combs

electroblotting

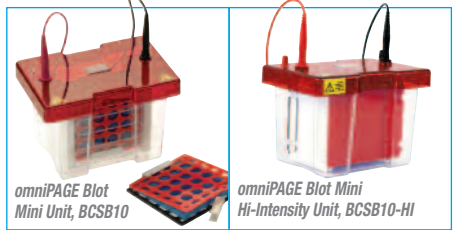
omniPAGE Electroblotting Systems include both modules required for Slab Gel Electrophoresis and Electroblotting along with accessories, to provide a complete Mini Vertical gel casting, running and electroblotting system. The electroblotting module includes four inter-locking cassettes and eight fibre pads. A high intensity current is generated by coiled platinum electrodes. These, in conjunction with the advanced cooling features, allow rapid electroblotting in just 1-2 hours.

Complete stand-alone units BCSB10 for 10x10cm electroblotting formats, comprise omniPAGE tank and lid, electroblotting module, cassettes and fibre pads. Modules are interchangeable with omniPAGE slab and tube gel modules. Hinged rigid cassettes allow rapid set up and convenience and ensure even contact between the gel and membrane is maintained.



modules included in omniPAGE MINI Vertical Electrophoresis & Blotting System, BCVS10CBS or BCVS10CBS-HI

For combs, see page 30



omniPAGE Blot Mini Unit, BCSB10

omniPAGE Blot Mini Hi-Intensity Unit, BCSB10-HI

2-D systems

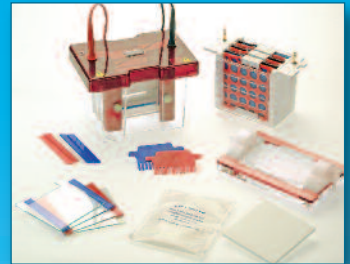
The omniPAGE 2-D Systems include both modules required for Slab Gel and First Dimension Electrophoresis and accessories, to provide a complete MINI 2-D system. The Tube Gel Module includes a rapid release gasket for easy tube extraction. Focusing can be accomplished in as little as three hours. Disposable capillary tubes are included in addition to 2-D combs and spacers which are colour coded according to thickness for easy identification.

A complete stand-alone unit, BCVS10DC, for first dimension capillary/tube gel electrophoresis, comprises omniPAGE tank and lid, tube gel module, tubes and blanking ports. Units are interchangeable with omniPAGE slab gel and electroblotting modules.



omniPAGE Mini Tube Gel Unit, BCVS10DC

- HINGED CASSETTES
- 4 BLOT CAPACITY
- STANDARD AND HIGHINTENSITY OPTIONS
- RAPID SET-UP COOLING



Technical Specifications

PLATE DIMENSIONS,	10 x 10cm (W x L)
GEL DIMENSIONS,	7.5 x 8cm (W x L)
MAX. SAMPLE CAPACITY	PAGE - 80 SAMPLES, 20 SAMPLES /GEL BLOT - 4 BLOTS
BUFFER VOLUME	MIN 250ML; Max 1200ML

- RAPID SET-UP ELECTRO-FOCUSING
- 10 TUBE CAPACITY
- EXTENDED ACCESSORY RANGE
- ENHANCED COOLING FEATURES



Technical Specifications

PLATE DIMENSIONS,	10 x 10cm (W x L)
GEL DIMENSIONS,	7.5 x 8cm (W x L)
MAX. SAMPLE CAPACITY	PAGE - 80 SAMPLES, 20 SAMPLES /GEL 2D - 10 TUBES
BUFFER VOLUME	MIN 250ML; Max 1200ML

ORDERING INFORMATION

BCVS10CBS	Complete omniPAGE Mini (10 x 10cm) Vertical Electrophoresis & Blotting System , comprising: 1x omniPAGE Mini Vertical Unit which includes: 2x2mm thick notched glass plates, 2x2mm thick plain glass plates with 1mm thick bonded spacers, 1x dummy plate, 2x combs (1mm thick, 12 samples), 1x casting base, silicone mat, cooling pack. plus: 1x Electroblotting Module which includes: internal electroblotting module, 4x compression cassettes for gel sizes up to 10x10cm and 16x fibre pads.
BCVS10CBS-HI	Complete omniPAGE Mini (10 x 10cm) Vertical Electrophoresis & High Intensity Blotting System , comprising: 1x omniPAGE Mini Vertical Unit which includes: 2x2mm thick notched glass plates, 2x2mm thick plain glass plates with 1mm thick bonded spacers, 1x dummy plate, 2x combs (1mm thick, 12 samples), 1x casting base, silicone mat, cooling pack. plus: 1x High Intensity Electroblotting Module which includes: internal electroblotting module, 2x compression cassettes for gel sizes up to 10x10cm and 8x fibre pads.
BCSB10	omniPAGE Blot Mini Unit, 10 x 10cm System including tank and lid, 4 cassettes, 16 fibre pads, cooling pack
VS10BI	omniPAGE Blot Mini Module - includes 4 cassettes and 16 fibre pads
SB10C	omniPAGE Blot Mini Cassette
BCSB10-HI	omniPAGE Blot Mini Unit, 10 x 10cm, High Intensity System including tank and lid, 2 cassettes, 8 fibre pads, cooling pack
VS10BI-HI	omniPAGE Blot Mini High Intensity Module - includes 2 cassettes and 8 fibre pads
SB10F	Fibre pads - pk/8